



QUICK START GUIDE: Web Publishing

Preface

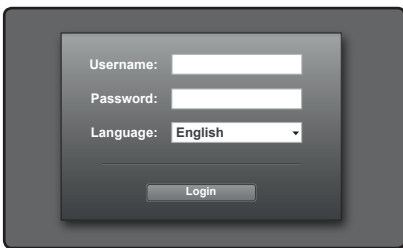
After your FSI Server is up and running, follow these steps to publish images using FSI Viewer. If you installed your FSI Server and need to create a new folder in your FSI Server's root directory, please refer to Chapter 3.2 of the FSI Server manual.

Part I

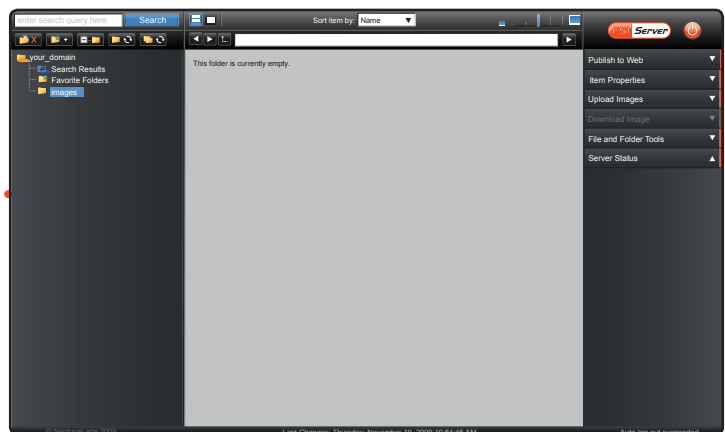
This guide will show you, how to upload your images to FSI Server and publish them using the FSI Server interface. If you would like to publish a catalog on your website and like to know how to convert your PDF into images suitable for online publishing, please refer to Part 2 of this quickstart guide.

UPLOADING IMAGES

After you have started the FSI Server service, launch your browser and enter the following URL in the address bar:
`http://your_domain/fsi/interface/`

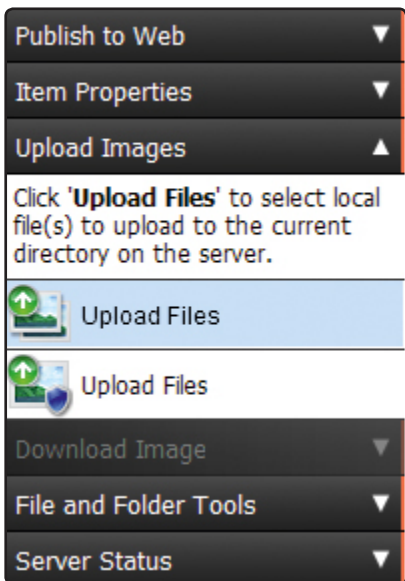


You will see the login screen of the FSI Server interface. The default login and password is "admin". Please enter "admin" as username and "admin" as password (without the quotes) and click the "Login" button.



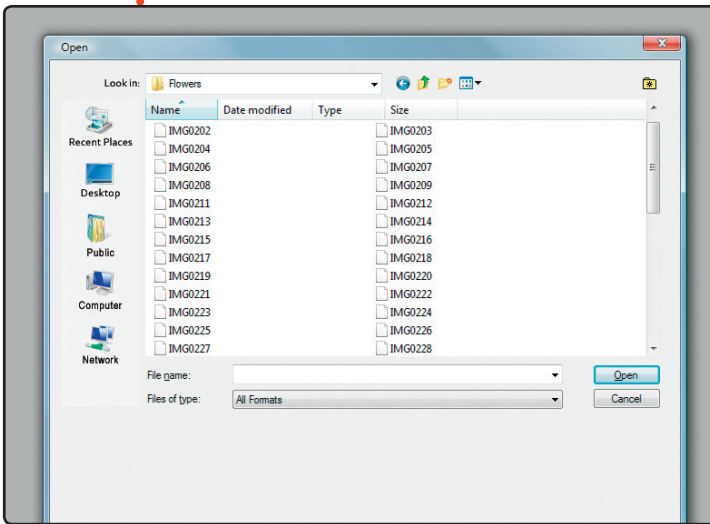
If the login succeeded you will see the FSI Server interface. This is where you upload and manage your images and generate codesnips for publishing.

In this sample we have created an empty folder "images". In the folder tree to the left. Click this folder or the related folder in your setup. **Please note** that the available options in the toolbar at the right of the screen change, depending on your selection in the interface.

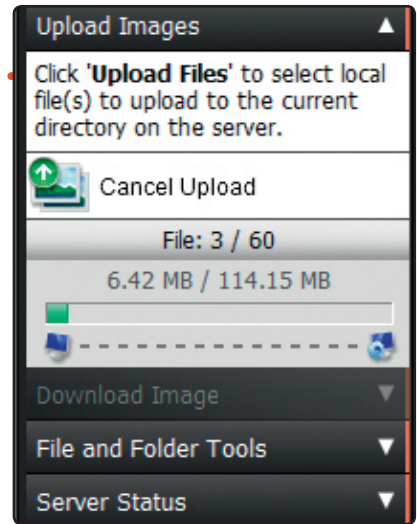


After selecting your folder, please click on "Upload Images":

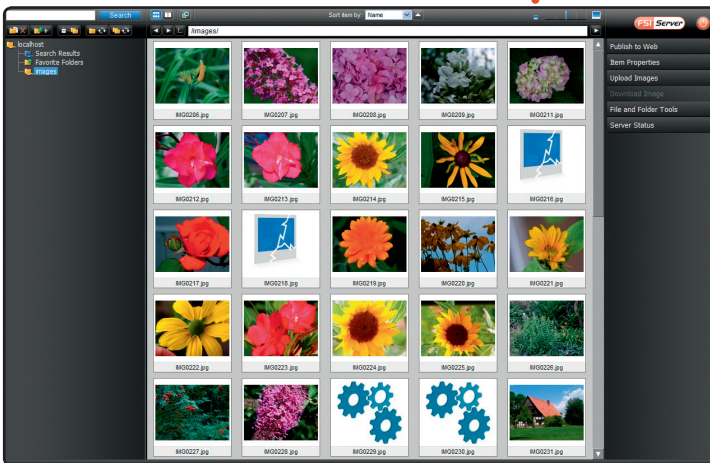
You will notice two upload options. Each uses a different way of sending the images to FSI Server. The first will open a file requester from the OS which is the one we will be using in this guide.



In this dialog, please navigate to the images you would like to upload and select them, then click "Open". We will upload some flower images to use as an example in the following steps.



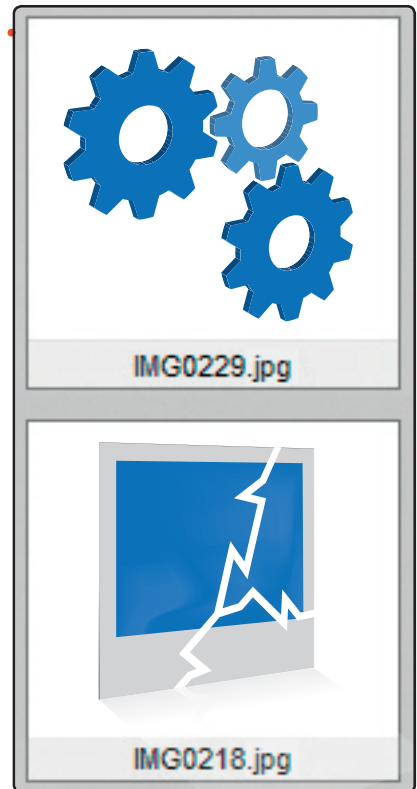
While uploading the toolbar will display a progress bar and a "Cancel Upload" button.



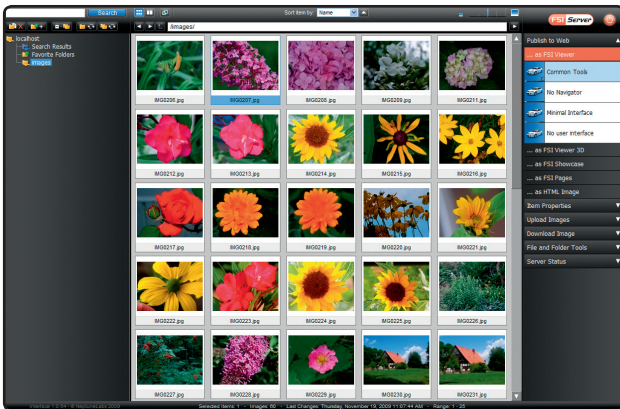
When the upload is finished, the interface will be updated and the images will be displayed as small thumbnails in the interface:

The first icon (the gears) indicate that the image is being imported. Depending on the speed of the server, conversion may take some time. The second icon (brocken image) indicates that the image could not be converted. This is usually due to invalid images or the image not being fully uploaded yet. FSI Server will frequently rescan each folder and try to convert all images found, so wait a few seconds and refresh the folder by right clicking any icon and selecting "Refresh selected folder" from the context menu until all images are converted.

You may notice some special thumbnails in this screenshot:

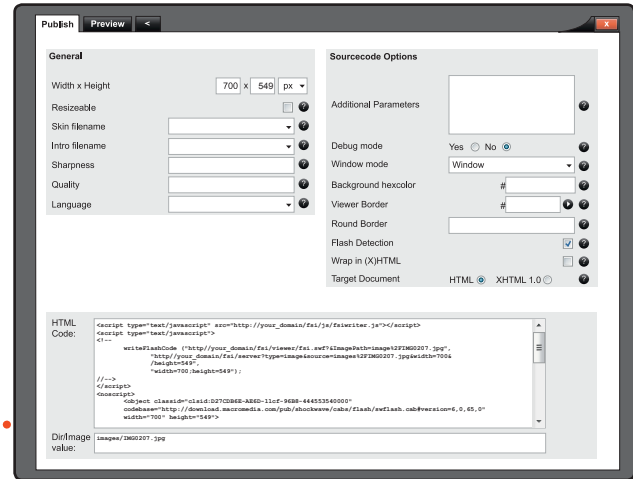


PUBLISHING IMAGES

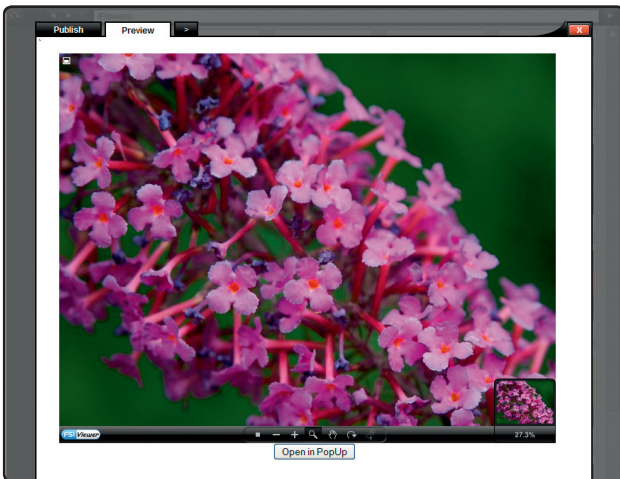


Select an image in the folder. The "Publish to Web" option in the toolbar is enabled. Please choose "Common Tools" from the "... as FSI Viewer" option

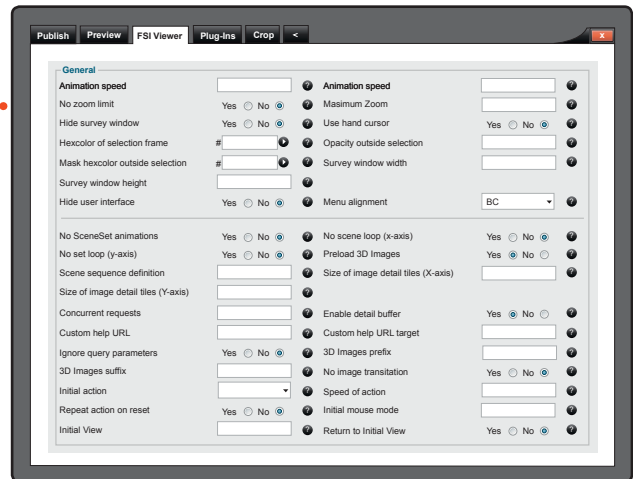
The publishing interface will open:



Please note the different tabs at the top. By default the "Publish" tab will open. In this tab you can set some global settings and copy the HTML Code snippet, which you need to include in your website to display FSI Viewer.



Switching over to the "Preview" tab will display FSI Viewer with all the current settings that have been selected.



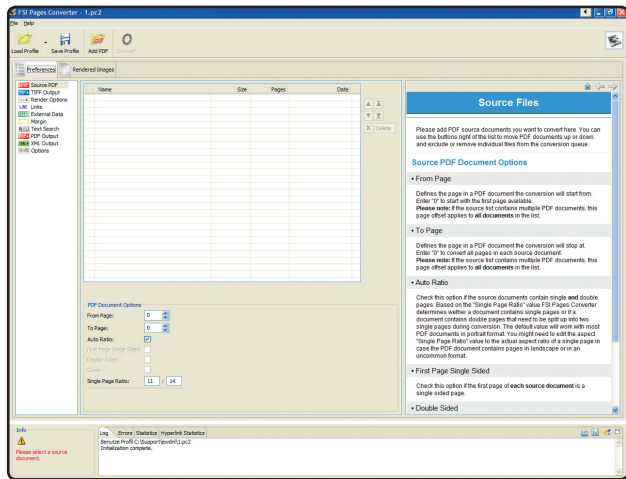
Clicking the arrow tab will provide access to further tabs, where you can fine tune other options and add additional plugins as needed.

After you have tweaked your FSI Viewer to your liking, switch back to the "Publish" tab and copy and paste the HTML Code to your website.

Part II

This chapter will guide you through converting your PDF file into high resolution source images to be published as an online catalog using FSI Pages. To follow this guide you will need an Adobe PDF file, such as the sample catalog that can be found in the "Samples" subfolder of your FSI Pages Converter installation.

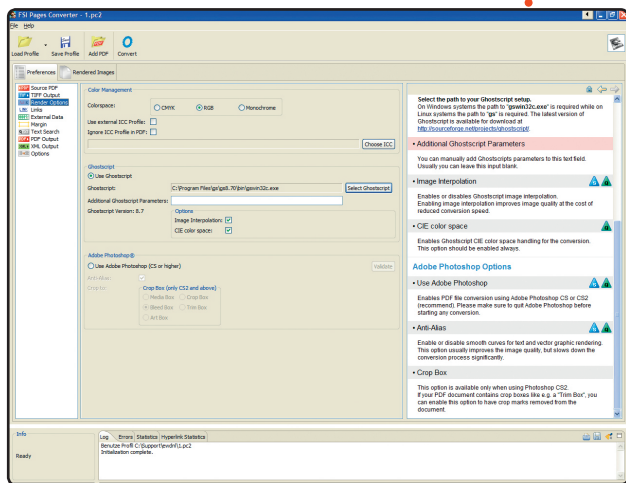
CONVERTING PDF TO IMAGES



Using FSI Pages Converter

When you launch FSI Pages Converter the first time, you will need to make some basic settings. **Please note** the Info window at the bottom left which reads "Please select a source document". To do this, please click the "Add PDF" icon at the top and browse to your PDF file. After the PDF has been selected, it will show in the list under the "Source PDF" options. You can select multiple PDF files and arrange the order in which they get converted using the arrow icons to the right of the PDF file list.

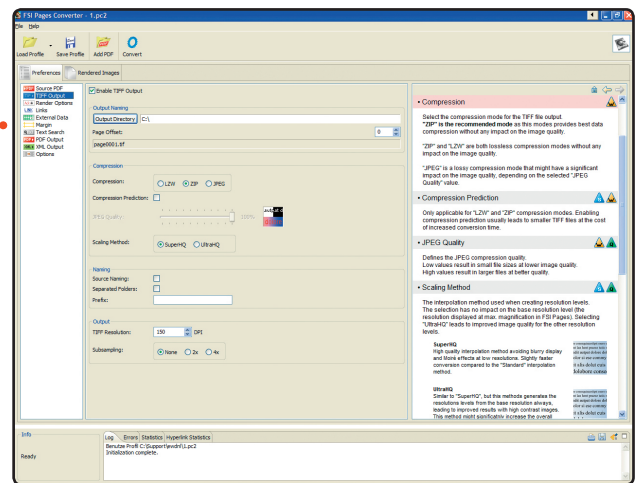
At the bottom you will find the PDF document options. These let you define how FSI Pages Converter will treat the PDF document. If your PDF is built from double sided pages which need to be splitted into two separate images, please check the "Double Sided" checkbox. The icons below will display the scheme of the PDF file(s) according to the settings here.



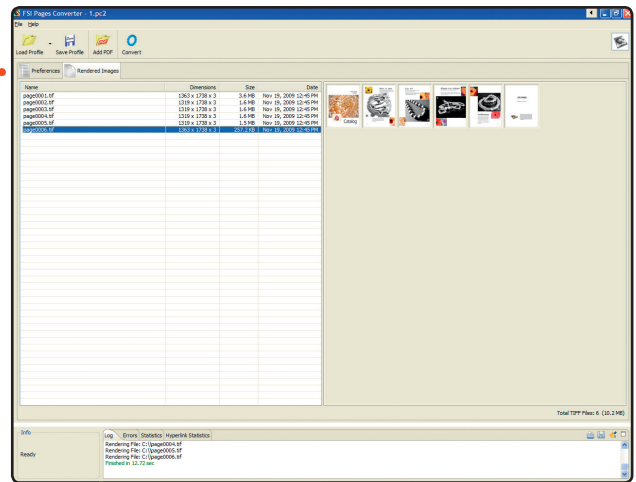
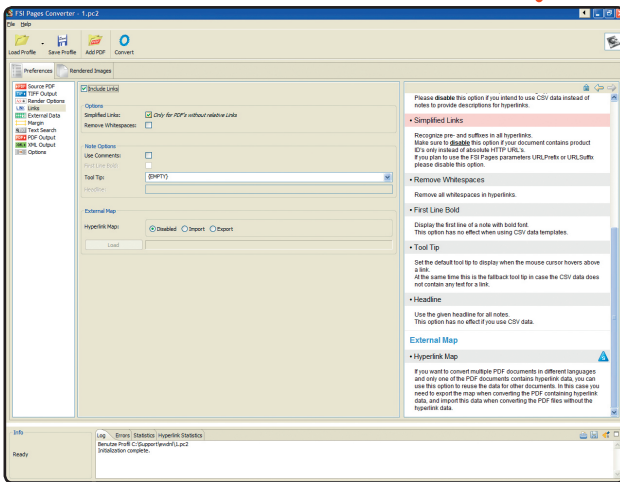
Next you need to specify the path to Ghostscript. Click the "Render options" on the left to open the related settings screen. Check the "Use Ghostscript" button and browse to your Ghostscript binary using the "Select Ghostscript" button.

Ghostscript is mandatory and is needed even if you intend to render your files using Adobe Photoshop.

You can specify different settings in each screen, we will not describe each option in detail in this quickstart guide. Please refer to the help text of each option in the helpframe.



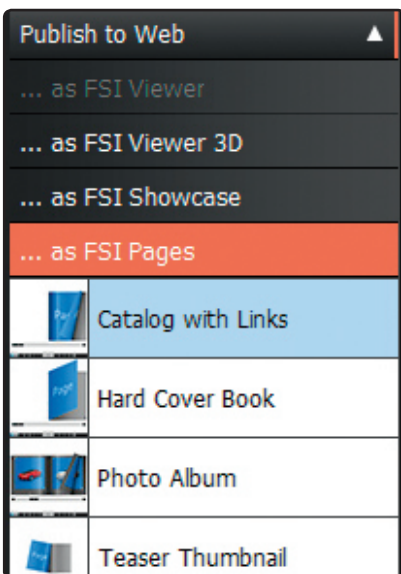
Next open the Tiff output screen by clicking the related entry on the left. Specify an output directory. This is the directory FSI Pages Converter will create the images in.



If your PDF document contains hyperlinks, please enable the "Include Links" option in the "Links" settings screen. This will enable links and tooltips in FSI Pages later.

Finally click the "Convert" icon atop. FSI Pages Converter will switch to the "Rendered Images" tab and display icons of the rendered files.

UPLOADING AND PUBLISHING



Next you need to upload the images to your FSI Server as described in Part I. Create a new folder and upload the images to this new folder. After the conversion is finished, select the **folder** from the folder tree and select the "Catalog with Links" option from the "Publish as FSI Pages" toolbar option.

This will create an online catalog using the FSI Pages Addon. You can alter any settings in this publishing interface as described in Part 1.

If you are satisfied with the result, copy the HTML from the "Publish" tab to your website.



For further information and tutorials on using the advanced features of FSI Pages Converter, please refer to our online tutorials located at <http://www.fsi-viewer.com/tutorial.html>