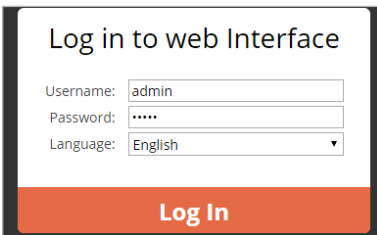


This guide will show you how to quickly upload your images to your newly installed FSI Server 2016 and publish them using the FSI Server web interface.

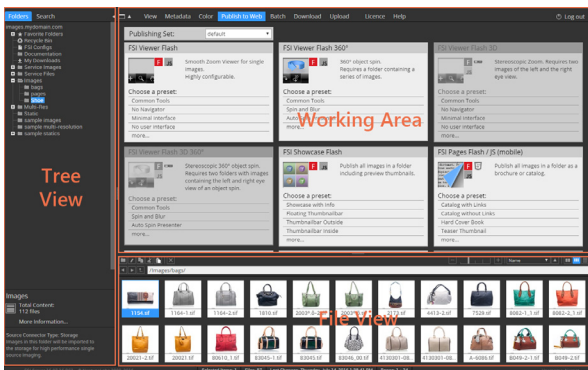
UPLOADING IMAGES

After you have started the FSI Server service, launch your browser and enter the following URL in the address bar:
http://your_domain/fsi/interface/

1 Please log in to your server and choose your language. The default username and password is **“admin”**, but it is strongly recommended to change the password prior to using FSI Server.

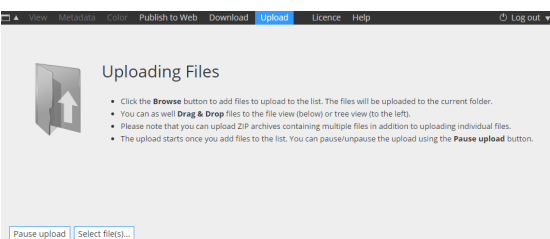


2 If the login succeeded, you can now see the FSI Server web interface.

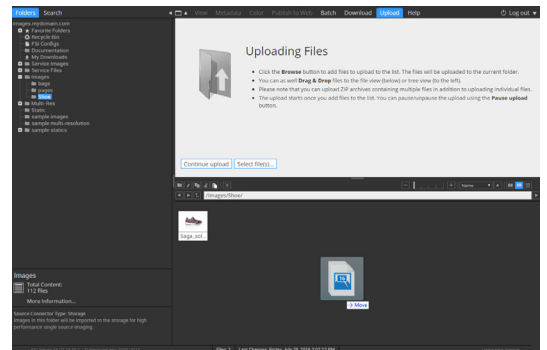


3 In order to upload images, you need to select or create a folder for your images. To do so, please go to the Tree View on the left of the interface, select the desired folder or select the relevant source connector (Storage), open the context menu, select **“Create new folder”** and type in the name of your folder.

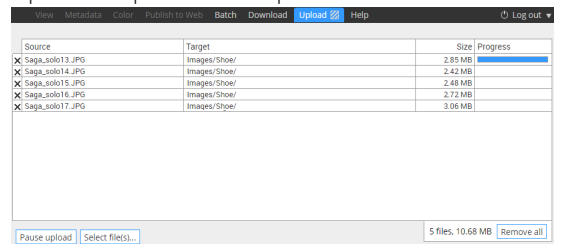
4 After selecting your folder, please select the **“Upload”** Tab located at the Working Area.



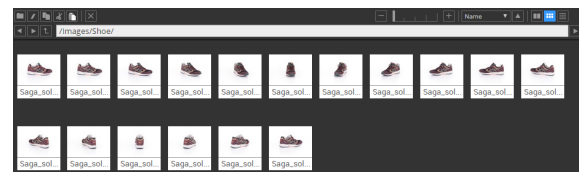
5 Click the **“Choose Files”** button to add files to the upload list. You can as well drag & drop the files to the file view below or the tree view to the left.



While uploading, the upload tab will display some progress information as well as the option to pause the upload.



6 When the upload is finished, the file view will be updated and the images will be displayed as small thumbnails. The gear icons indicate that the image is being imported. Depending on the speed of the server, the conversion may take some time.



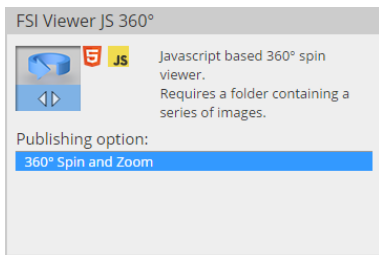
REVERSE TO CONTINUE INSTRUCTIONS

This guide will show you how to quickly upload your images to your newly installed FSI Server 2016 and publish them using the FSI Server web interface.

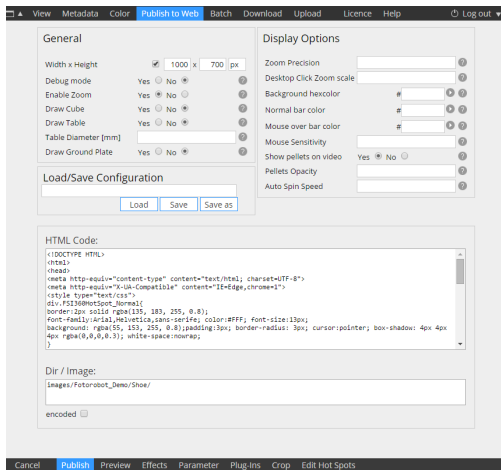
PUBLISHING IMAGES

After uploading your images to the web interface, you have several possibilities to publish your image. This part of the Quick Start Guide shows you how to publish your images as FSI Viewer JS 360° as an example.

1 Select an image within the folder. In order to publish it, select the **"Publish To Web"** tab located at the Working Area. Depending on the publishing option, there are several presets available.

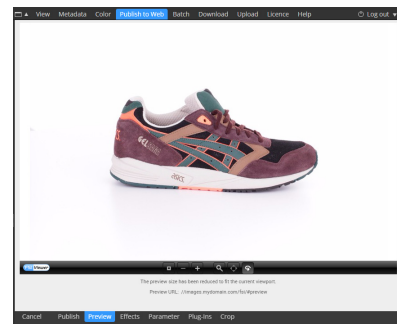


2 The publishing interface will open:

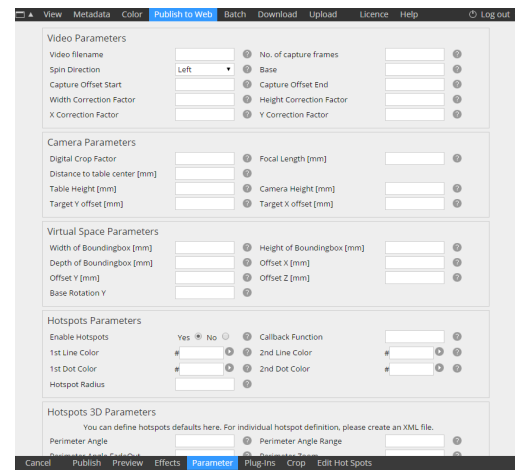


3 **Please note** the different tabs at the bottom. By default the **"Publish"** tab will open. In this tab you can set some global settings, choose the skin of the FSI Viewer and copy the HTML code snippet, which you need to include into your website to display FSI Viewer.

4 Selecting the **"Preview"** tab will display FSI Viewer with all current settings that have been selected



5 With the other tabs (Parameter, Effects, Plug-Ins, Crop & Edit Hot Spots) you can fine tune other options and add additional effects, hot spots or plugins as needed.



6 After you have tweaked the parameters to your liking, go back to the **"Publish"** tab and copy and paste the HTML code to your website.

For further information and tutorials, please refer to the FSI Viewer Manual or to our on-line tutorials at www.neptunelabs.com

